



0.75L 2L

INTERIOR PAINT
BATHROOM - MULTI-SURFACE

 DURABLE AND WASHABLE	TILE SUBSTITUTE	 100% WATERPROOF
--	-----------------	---

Easy as 1,2,3!

1  CHOOSE your project **INDOOR** OR **OUTDOOR**

2  Pick your colour

3  EXPRESS YOURSELF
enjoy!)





DRYING TIME



Recoat

Fully dry



before the first shower

TOOLS



Brush



Roller

TOOL CLEANING



Water

COVERAGE

0,75L e

1X ± 9 m²

PREPARATION

Surface preparation is an essential step. Washing the surface with a soda based (alkaline) cleaner is required.

On porous surface: (plasterboard, plaster and woodwork) remove dust and apply an undercoat. On old surface already painted (walls, woodwork): wash and rinse thoroughly with water, leave it to dry for 24 hours then sand and remove dust.

On non-porous surface (earthenware, wall tiles, listels, glass blocks): wash, rinse, leave it to dry and apply directly without undercoat.

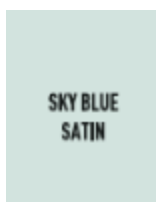
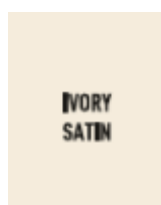
PERFORMANCE

Durable and washable. Resistant to care and maintenance products: shampoos and shower gels.

Resistant to repeated water splashing. Does not flake - the paint finish is highly durable in hot and cold water temperature variations (10°C/40°C)

APPLICATION

1. A sachet is placed under the lid of the tin. It contains an additive that must be added to the paint before applying it. Empty the entire sachet into the tin of paint.
2. Stir the paint thoroughly to mix it properly.
3. Apply the paint evenly, in two coats, from top to bottom to obtain the optimal performance and a perfect finish.
4. Optimum product performance and adhesion is achieved after 20 days from application. Treat the surface gently for the first 20 days after application.



TIPS & TRICKS



www.v33.co.uk
+44 (0) 1797 367555
Liberon Limited
Learoyd Road, Mountfield
Industrial Estate, New Romney,
Kent TN28 8XU