



RENOVATION WALL TILE & PANELLING



**WATERPROOF BARRIER
AQUARESIST TECHNOLOGY**

2 in 1: No undercoat, directly on wall tiles and panelling

High resistance to household cleaning products



HIGH PERFORMANCE FOR YOUR RENOVATION

RENOVATION WALL TILE & PANELLING has been specially developed to renovate high-huse surfaces, even inside showers.

Thanks to the combination of specific polymers and the Additive System, a real performance booster, it offers a high-quality finish, ready to face all the hazards of everyday life. WALL TILE & PANELLING

**Tested with shampoos, shower gels, classic household products, anti-limescale products, diluted bleach, white vinegar.*



HIGH ADHESION
even in wet environments



HIGH RESISTANCE
to temperature variation



HIGH RESISTANCE
to care and maintenance



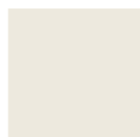
ULTRA WASHABLE
Easy maintenance

- 2 in 1: no undercoat.
- HIGH RESISTANCE to care and maintenance products: shampoos, shower gels, classic household products, anti-limescale products, diluted bleach, white vinegar...
- RESISTANT to repeated water splashing.
- Does not flake: high paint film resistance to temperature variations: hot water, cold water.
- Easy application: perfect finish.
- Ultra washable: easy maintenance.

COLOURCHART – Satin aspect



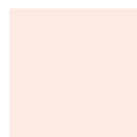
white



cotton



soft
grey



powder
pink



lagon
blue



charcoal
grey

**NO UNDERCOAT
NO STRIPPING**

RENOVATION WALL TILE & PANELLING

Drying time
Recoat : 6h – Fully dry: 24h
Tools cleaning: water

COVERAGE:

75ml = +/- 1m² - 750ml = +/- 10m² - 2L = +/- 24m²

This paint has been specially developed for wall tiles made of ceramic, glass bricks and PVC panelling; varnished, painted or bare woods. It is suitable for tiled shower cubicles.

This paint is not a sealant. Do not apply on sinks, bathtubs or floors.

TOOLS:

- Paint stirrer or wide stick
- 4-5mm short pile roller
- Round edged paint brush (for angles, corners & finishes)



PREPARATION:

PREPARATION of the surface is ESSENTIAL

WASH the surface with a sodabased or sugar soap (alkaline) cleaner, focusing on the grouting.

- **CERAMIC TILES, WALL TILES, BORDER TILES, GLASS BRICKS:** wash, rinse thoroughly with water then allow to dry.
- **PANELLING:** wash, rinse thoroughly with water then allow to dry. Lightly sand with 240 grit sandpaper and remove dust.
- **TILE GROUTING:** Carefully clean the tile grouting with an abrasive sponge or brush to remove any residual cleaning products or any traces of mould.

Remove any silicone sealant before painting. Reseal after application of the paint.

APPLICATION:

Apply the paint at room temperature between 12 and 25°C and avoid draughts.

1. Empty the additive (the sachet that is placed under the lid of the tin) into the paint. Stir the paint for 5 minutes, working around the bottom of the tin with a wide stick to mix it well.
2. Work on small surfaces. Apply from one end to the other. Follow with successive cross strokes. Do not start 2nd coat while it's still drying. Leave to dry for 6h and apply a 2nd coat in the same way. A 3rd coat may be required depending on the surface and colour.

Once the sachet has been added, the mixture must be used within 10 days to maintain optimal adhesion and performance.

V33 TIPS:

To clean your painted surfaces, use a gentle detergent and a non-abrasive sponge.

Optimum product performance and adhesion is achieved after 20 days from application. Treat the surface gently, avoiding direct impact, abrasion, staining or cleaning, for the first 20 days after application.

HEALTH & SAFETY

Contains biocidal products (preservatives): contains reaction mass of: 5-chloro-2-methyl-4-isothiazolin-3-one and 2-methyl-2H-isothiazol-3-one (3:1); 1,2-ben zisothiazol-3(2H)-one. May produce an allergic reaction. EUH211 : Warning! Hazardous respirable droplets may be formed when sprayed. Do not breathe spray or mist. P102 : Keep out of reach of children. P271 : Use only outdoors or in a well-ventilated area. P501 : Dispose of contents/container to a waste collection center (contact the local authority). Do not allow to freeze. EU limit value for this product (cat A/j) : 140g/L (2010). This product contains max 4g/L VOC.

