



DECKING PAINT

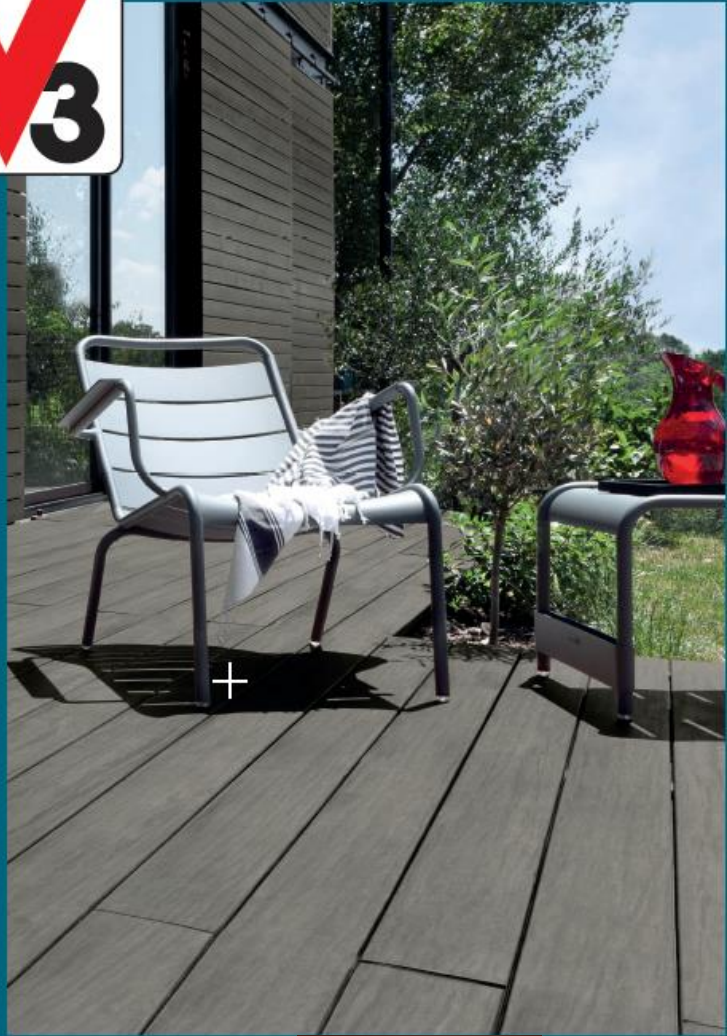
COLOUR GUARD



**ANTI-SLIP - WATER REPELLENT
REINFORCED PROTECTION**

- 2 in 1 decorates and protects ◀
- Matt opaque finish ◀
- Washable ◀

5
YEARS
GUARANTEE



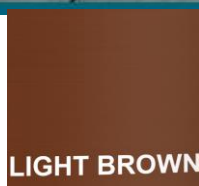
LIGHT SILVER



DARK SILVER



GUN METAL



LIGHT BROWN



MEDIUM BROWN

Colour Guard Decking Paint is ideal for exterior wooden decking : Soft, hard, exotic, smooth or grooved. Direct on all surfaces: no cleaning, no undercoat and no wiping.

Resistant to foot traffic, impact, UV, bad weather, stains and everyday dirt. Does not flake: Easy renovation without sanding.

Anti-slip : Class PN12 according to standard AFNOR XP P05-011, anti slip system not suitable for pool edges.

Opaque, it will give a second life to woods.

- Aspect : MAT
- Sizes : 2,5L
- Coverage : 2,5L = ± 25sqm

 ANTI-SLIP · WATER REPELLENT REINFORCED PROTECTION	<p>Colour Guard Decking Paint is the solution to embellish and renovate your exterior woods.</p> <p>Anti-slip safety on deckings.</p>	DRYING TIME  8h RECOAT  24h FULLY DRY
 WATER REPELLENT WITH UV FILTERS		 DEPTH PENETRATION
		TOOLS   Brush, Roller

5 YEARS GUARANTEE

5 year guarantee when product is applied according to preparation and application instruction. On surfaces not subject to capillary rise.

- The guarantee is limited to refunding of the product (presentation of the receipt and the tin) and concerns only the appearance of the paint.

PREPARATION

- To ensure a perfect finish on timber previously treated with Sealer/Paint/Woodstain, please sand the existing treatment to expose the bare wood. Ensure the wood is dust-free. On exotic and hardwoods, dilute the first coat with 10% water.
- One final check: 'The Water Drop Test'. Place a small amount of water on the timber. If the water droplet absorbs into the timber, you may apply the Decking Paint. If the water droplet remains on the timber surface, the Decking Paint will not adhere. Degrease the surface with denatured alcohol.
- On new timber, wait three months before applying Decking Paint; this will then allow the timber to absorb the Decking Paint fully.
- On exotic, hardwood or oily timber : Please remove any excess oil using denatured alcohol.

APPLICATION

- Ideal application conditions: between 12° and 25°C, in dry weather. We wouldn't recommend applying the Decking Paint in strong winds and when bad weather is forecast.
- Stir the product well before and during use.
- Stir the paint with a mixer or wide stick, working around the bottom of the tin to mix it well.
- Apply the product with a brush between the grooves and edges in 2 sqm areas at a time, then paint with the roller in various directions, (top to bottom and sideways), avoiding excessive application.
- Please allow 8 hours before applying a second coat. On highly porous or highly exposed decking, a third coat may be required.
- Ideally, allow a further 48 hours before light usage on the decking.
- If there are any signs of heavy wear or surface damage, we would advise that a maintenance coat is applied. Woods with little absorption (Iroko, Wenge, Larch etc) require a regular application of a maintenance coat.
- Applying further coats of Decking Paint: Wash existing timber with pressure washer and remove any foliage / moss and excess oil stains.

V33 TIPS

- The performance and the optimal resistance of the product is obtained after 2 weeks. Avoid stressing your surface (shocks, stains, cleaning...) during this period.
- Time required to put the decking back into service: pedestrian use within 48 hours.
- To obtain the performance and resistance of this product, it is essential to apply 2 coats, without overload, even on porous substrates.
- For optimum adhesion, application must be carried out on dry wood. Wait 3 days of dry weather before applying the 1st coat and without risk of rain within 48 hours after applying the 2nd coat.
- For exterior use only.